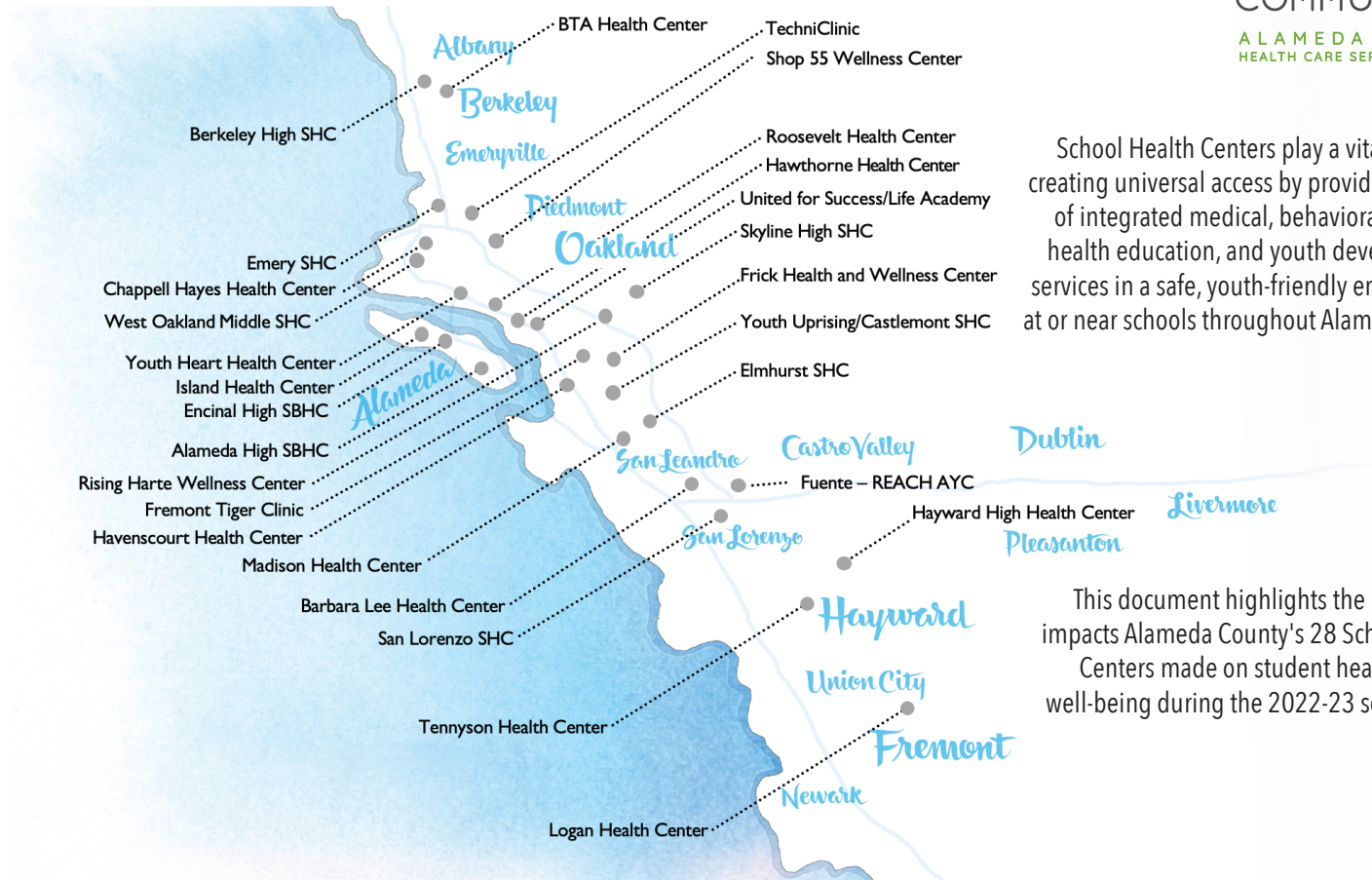
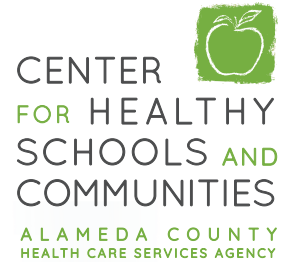


ALAMEDA COUNTY SCHOOL HEALTH CENTERS

2022-23 SCHOOL YEAR BY THE NUMBERS



School Health Centers play a vital role in creating universal access by providing a range of integrated medical, behavioral health, health education, and youth development services in a safe, youth-friendly environment at or near schools throughout Alameda County.

This document highlights the positive impacts Alameda County's 28 School Health Centers made on student health and well-being during the 2022-23 school year.



SERVICES OFFERED

- Mental health counseling and case management
- Medical condition diagnosis and treatment
- Dental screening and treatment
- Health education on nutrition, sexual health, and substance use prevention
- Youth development and leadership programs

IMPACT: PROVIDING UNIVERSAL ACCESS TO HEALTH CARE

School Health Centers provide youth access to health care in a convenient and familiar setting and have been shown to improve health equity and health and education outcomes.¹

During the 2022-23 school year:

13,533 clients made **53,067** visits across the 28 School Health Centers.

Nearly **3** out of **5** clients returned for multiple School Health Center visits, demonstrating the value of integrated services.



"The health center really makes sure that we get our needs met and goes above and beyond to support us."

-School Health Center Client

NUMBER OF VISITS TO SCHOOL HEALTH CENTERS

28,695
Medical visits

17,877
Behavioral health visits

6,495
Dental visits

"I asked for therapy services and they got back to me very quickly and I appreciated it."

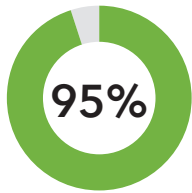
-School Health Center Client

IMPACT: ENHANCING ACADEMIC SUCCESS

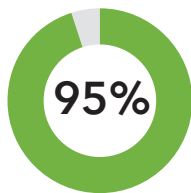
Studies have documented that healthy students have improved academic outcomes.^{2,3} School Health Centers are designed to provide health and wellness services to support the school population and help eliminate barriers to academic success.

School Health Center users were more likely than non-users to report they talked to a doctor, nurse, or counselor about how school is going in the past year (44% vs. 33%).

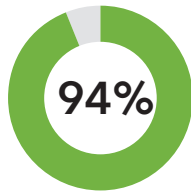
Nearly all clients agreed that the School Health Centers helped them:



Feel like they have an adult at school who cares about them



Want to do better in school

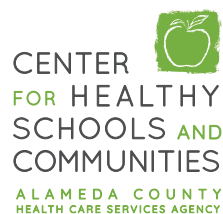


Have goals and plans for the future

NEARLY ALL CLIENTS AGREE THAT THE SCHOOL HEALTH CENTER...

- Encourages students to take care of their mental health (98%)
- Is easy to get help from when needed (97%)
- Helped them learn how to take better care of their health (97%)
- Is a place they would tell a friend to go if they needed help (97%)
- Helped them deal with stress/anxiety better (94%)

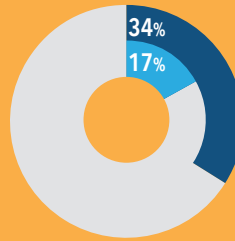
The mission of the Center for Healthy Schools and Communities (CHSC) is to foster the academic success, health, and well-being of Alameda County youth by building universal access to high quality support and opportunities in schools and neighborhoods. We envision a county where all young people graduate from high school healthy and ready for college and career.



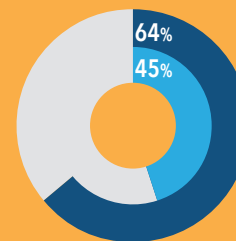
IMPACT: INCREASING ACCESS

Clients who used the School Health Centers were more likely than non-users in the same schools to report receiving support in the past year.

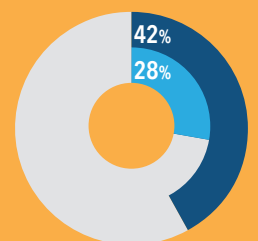
■ School Health Center users ■ Non-users



Talked to a doctor, nurse, or counselor about their moods or feelings



Received reproductive health services when needed



Received counseling services when needed

Source: California Healthy Kids Survey (CHKS)

IMPACT: SUPPORTING THE SCHOOL COMMUNITY

School Health Centers reach beyond the clinic walls to provide public health services to the entire school community.⁴ The School Health Centers made the following school community contacts:

22,057

FIRST AID CONTACTS
(INCLUDES SUPPLIES)

12,913

HEALTH FAIR/
OUTREACH CONTACTS

5,598

CLASSROOM HEALTH
EDUCATION CONTACTS

3,563

YOUTH DEVELOPMENT CONTACTS

1,678

PEER HEALTH
EDUCATION CONTACTS

419

SCHOOL STAFF
WORKSHOP CONTACTS

399

BEHAVIORAL HEALTH GROUP
CONTACTS (NOT THERAPY)

270

PARENT WORKSHOP
CONTACTS

¹ Knopf JA, Finnie RK, Peng Y, et al. School-Based Health Centers to Advance Health Equity: A Community Guide Systematic Review. *Am J Prev Med.* 2016;51(1):114-126.

² Bradley BJ, Greene AC. Do health and education agencies in the United States share responsibility for academic achievement and health? A review of 25 years of evidence about the relationship of adolescents' academic achievement and health behaviors. *J Adolesc Health.* 2017;52(5):523-532.

³ Basch CE. Healthier students are better learners: A missing link in school reforms to close the achievement gap. *J Sch Health.* 2011;81(10):593-598.

⁴ Keeton V, Soleimanpour S, Brindis C. School-based health centers in an era of healthcare reform: Building on history. *Curr Probl Pediatr Adolesc Health Care.* 2012;42(6):132-158.

UCSF Philip R. Lee Institute
for Health Policy Studies

This report was produced by the Alameda County Center for Healthy Schools and Communities in partnership with the School Health Evaluation & Research Team from the University of California, San Francisco (UCSF). <https://schoolhealthresearch.ucsf.edu>.

Evaluation Data Sources: Electronic Health Records, California Healthy Kids Survey (CHKS) Core and School Health Center Custom Modules (2022-23), Client Surveys, Quarterly Reports, and School Health Center Health Services Forms.